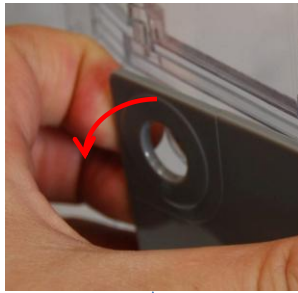


# Installing the flavor label into the PIC Dispenser

## A.) Removing the front cover.

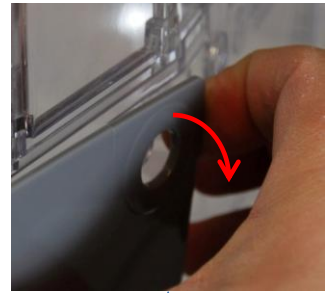
1



Position the dispenser on a stable surface

Using both hands, pull the front cover outward and away from the top locking tabs at the same time.

Pull the top of the cover slightly forward so that the tabs will not re-lock.



2



With the top of the front cover remaining unlocked, use both hands and pull it outward and away from the lower locking tabs.



3



With all the tabs unlocked, tilt the top of the front cover further forward while also lifting it up and away from the dispenser.

## Installing the flavor label into the PIC Dispenser

### B.) Placing the label.

4



Bow the flavor label outward and position it under the clear plastic tabs as shown.

5



Bow the flavor label inward and against the clear window.

6



Slide the label down and against the tabs of the clear window.

# Installing the flavor label into the PIC Dispenser

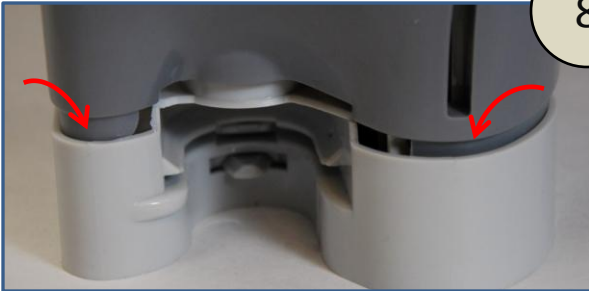
## B.) Installing the front cover.

7



Partially slip the front cover over the lever of the dispenser.

8



Place the tabs on the bottom of the front cover inside the bottom of the dispenser.

9



Using both hands, pull the lower portion of the front cover outward so that it is on the outside of the locking tabs on the dispenser.

10



Continue to tilt the top of the front cover into place on the dispenser. Check that all locking tabs are snapped correctly into place and the front cover is secure.