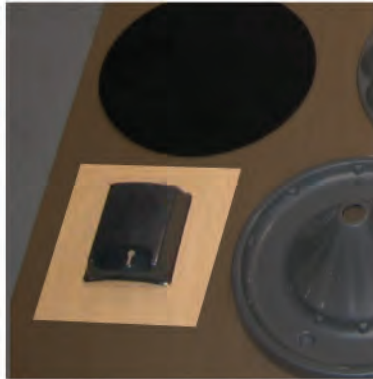


# 12 Color Machine Graphics

## Removal and Replacement Instructions

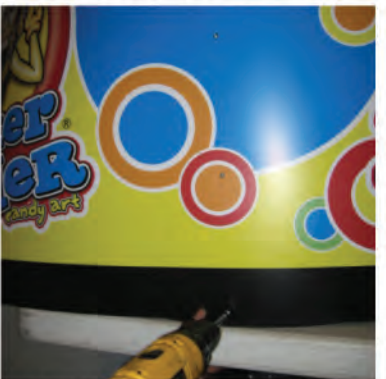


**Step one:** Remove the Waste Bin and Tube Holder from the machine.



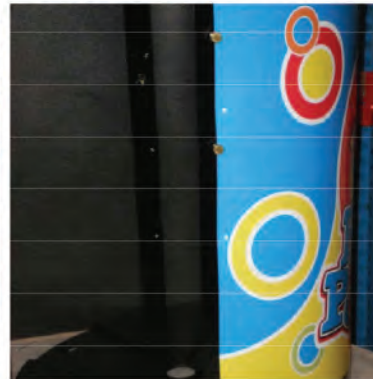
**Step two:** Remove the top cover of the machine. Lift the "Header" from the funnel cone.

**Step three:** Gently separate the "Header" graphic, at the seam. Uncurl the plastic material and lay flat.



**Step four:** Remove the "Funnel Cone" with a screw driver and carefully lift off over the center rod.

**Step five:** Remove the thumb screws from the base panel and remove the screws from the bottom.



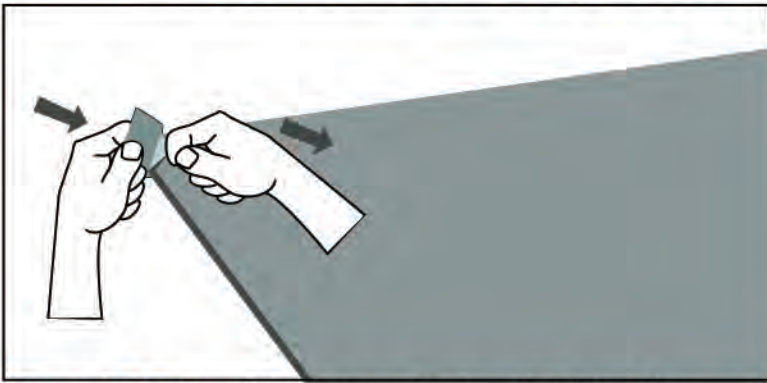
**Step six:** Remove the screws from the top of the base panel and gently unwrap the plastic from the frame.

**Step seven:** After removing the "Header" and the "Base Panel", lay them FACE UP for removing the vinyl graphics.

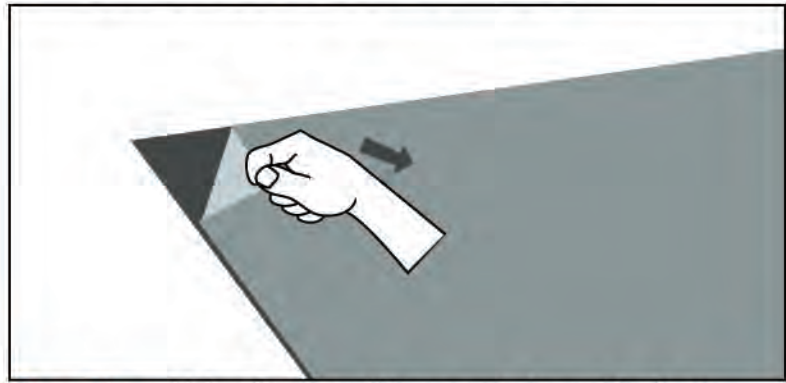


# 12 Color Machine Graphics

## Removal and Replacement Instructions (continued)



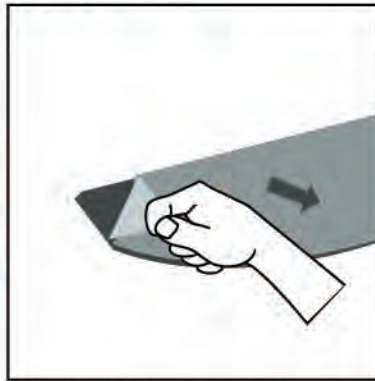
**Step eight:** Carefully remove the graphic from the plastic material using a thin, flat edged tool.



**Step nine:** Using force, pull the peeled graphic from the plastic.



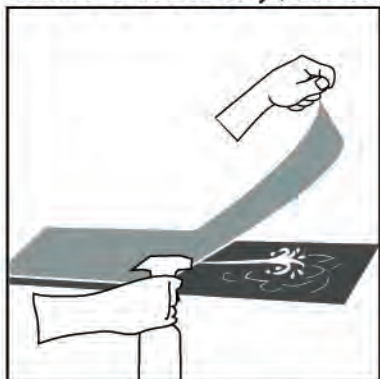
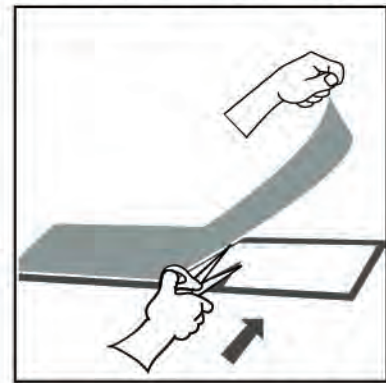
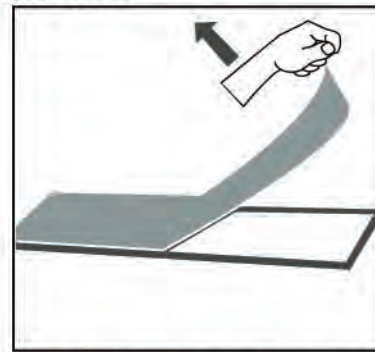
**Step ten:** Repeat this process for the Waste Bin and the Tube Holder



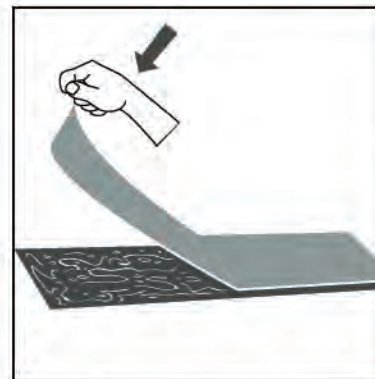
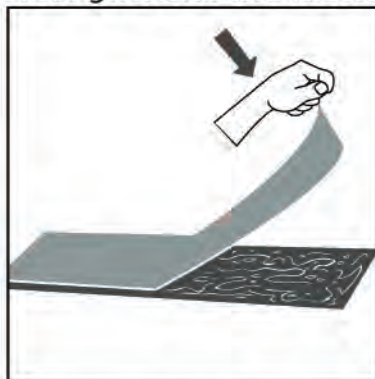
**Step eleven:** Once the vinyl has been removed, thoroughly clean the plastic surface with ISOPROPYL ALCOHOL, soap, and water



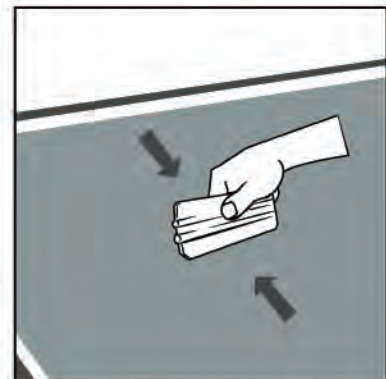
**Step Twelve:** Once surface is clean of debris and adhesive residue, lay the replacement graphic onto the plastic. Peel back 1/2 of the vinyl, cut the backing material and discard.



**Step thirteen:** Fill a bottle with water and a small amount of soap, spray on the plastic and the adhesive back side of the replacement vinyl. Lay the vinyl down slowly, using the soapy water to adjust the graphic.



**Step fourteen:** Repeat steps twelve and thirteen for the opposite side of the graphic



**Step fifteen:** Using a firm, level edged tool, smooth out the graphic, using even pressure and verticle strokes